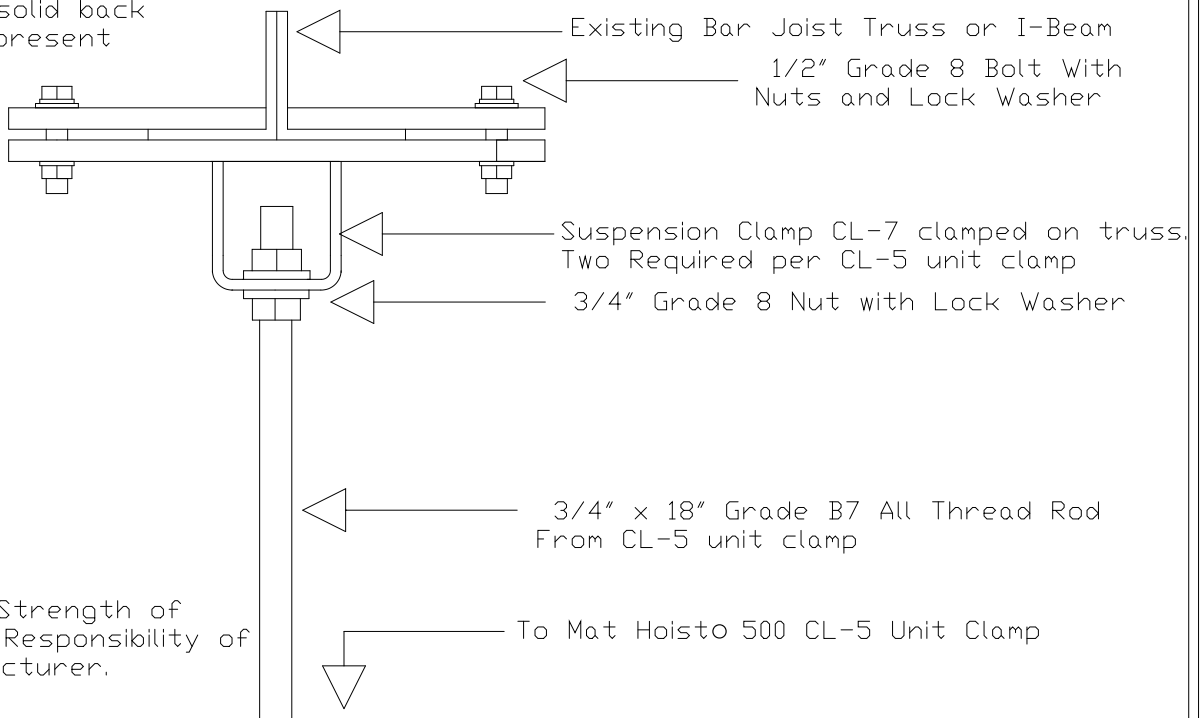


Note: Illustrates direct attachment when solid back to back angle is present



Note: CL-7 Clamp fits 3"-9" wide flange

Note: Structural Strength of Truss & Wall NOT Responsibility of Mat Hoisto Manufacturer.

NGE Inc.
P.O. Box 370/Industrial Park
302 North Erickson
Roland, IA 50236

Mat Hoisto 500
CL-7 Clamp
MH500-06

Phone: (515)-388-4118
Fax: (515) 388-4340
Email: mathoist@mathoist.com
Website: www.mathoist.com